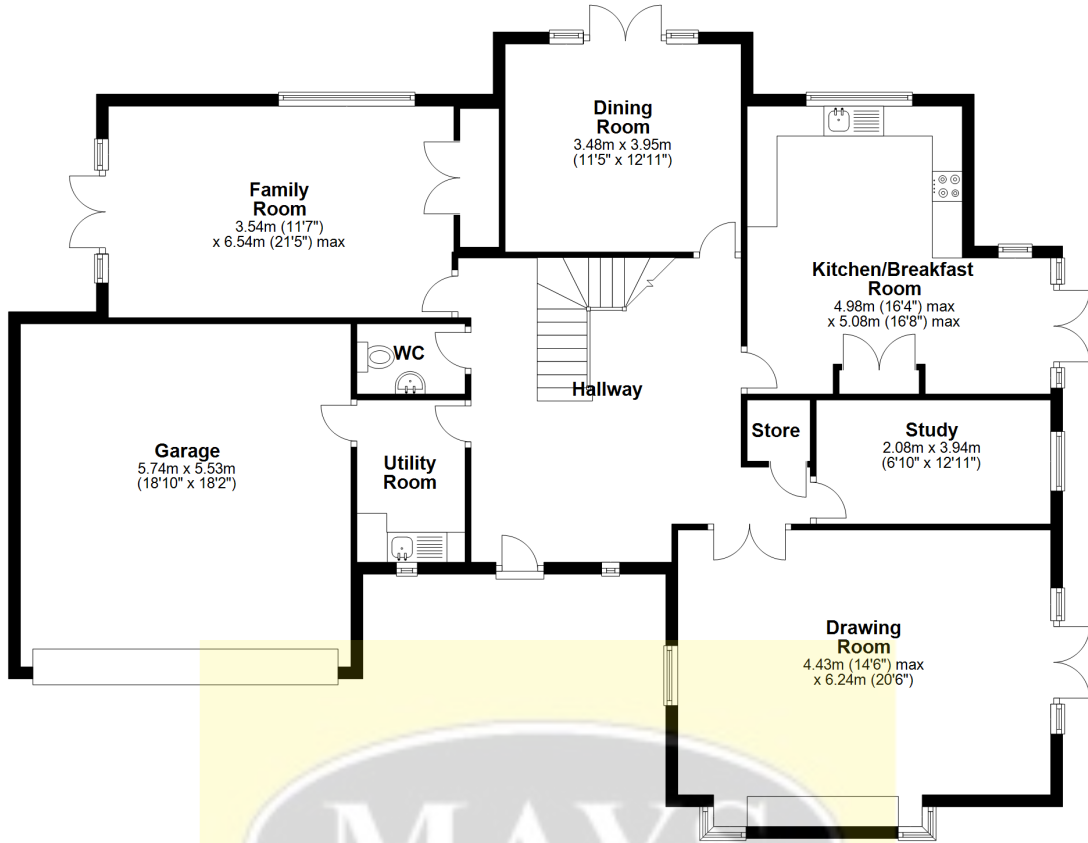


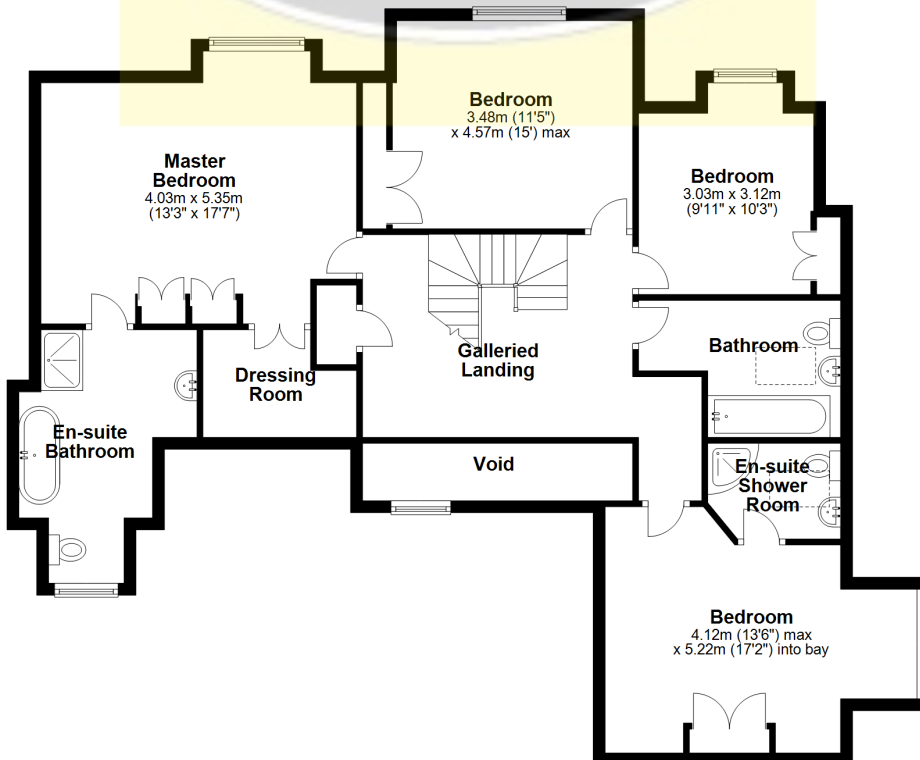
Ground Floor

Approx. 162.5 sq. metres (1748.7 sq. feet)



First Floor

Approx. 114.8 sq. metres (1235.5 sq. feet)



Total area: approx. 277.2 sq. metres (2984.2 sq. feet)

Bournemouth Energy Floor Plans are provided for illustration/identification purposes only. Not drawn to scale, unless stated and accept no responsibility for any error, omission or mis-statement. Dimensions shown are to the nearest 7.5 cm / 3 inches. Total approx area shown on the plan may include any external terraces, balconies and other external areas. To find out more about Bournemouth Energy please visit www.bournemouthenergy.co.uk (Tel: 01202 556006)
Plan produced using PlanUp.