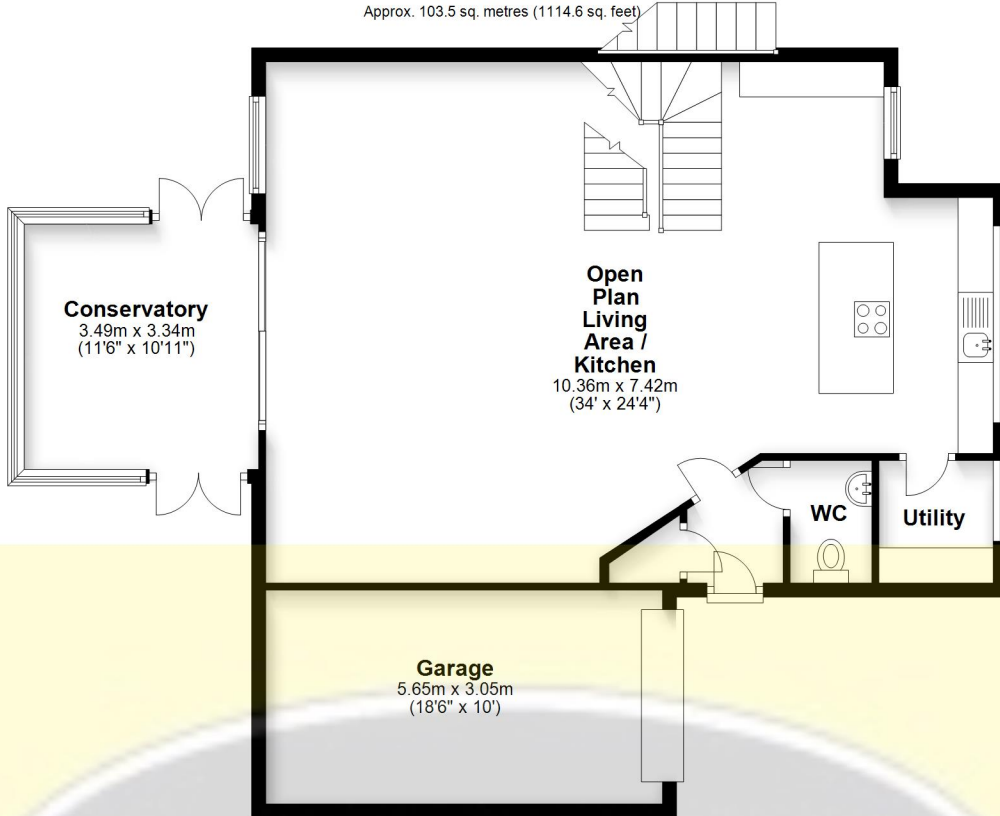


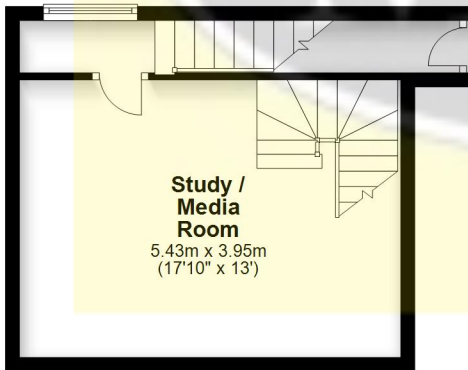
Ground Floor

Approx. 103.5 sq. metres (1114.6 sq. feet)



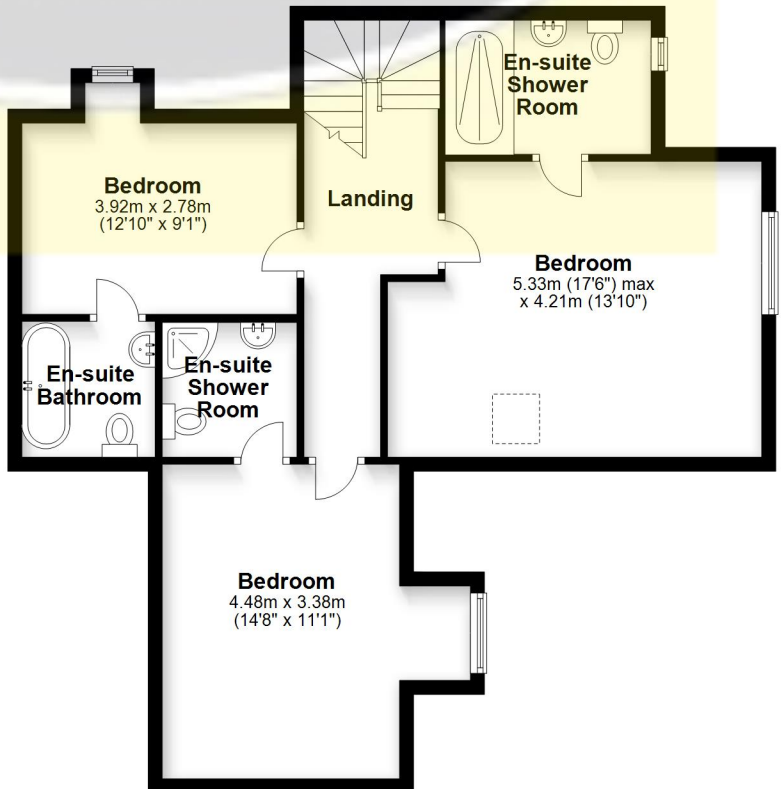
Lower Ground

Approx. 26.6 sq. metres (286.5 sq. feet)



First Floor

Approx. 73.6 sq. metres (792.0 sq. feet)



Total area: approx. 203.7 sq. metres (2193.1 sq. feet)

Bournemouth Energy Floor Plans are provided for illustration/identification purposes only. Not drawn to scale, unless stated and accept no responsibility for any error, omission or mis-statement. Dimensions shown are to the nearest 7.5 cm / 3 inches. Total approx area shown on the plan may include any external terraces, balconies and other external areas. To find out more about Bournemouth Energy please visit www.bournemouthenergy.co.uk (Tel: 01202 556006)
Plan produced using PlanUp.