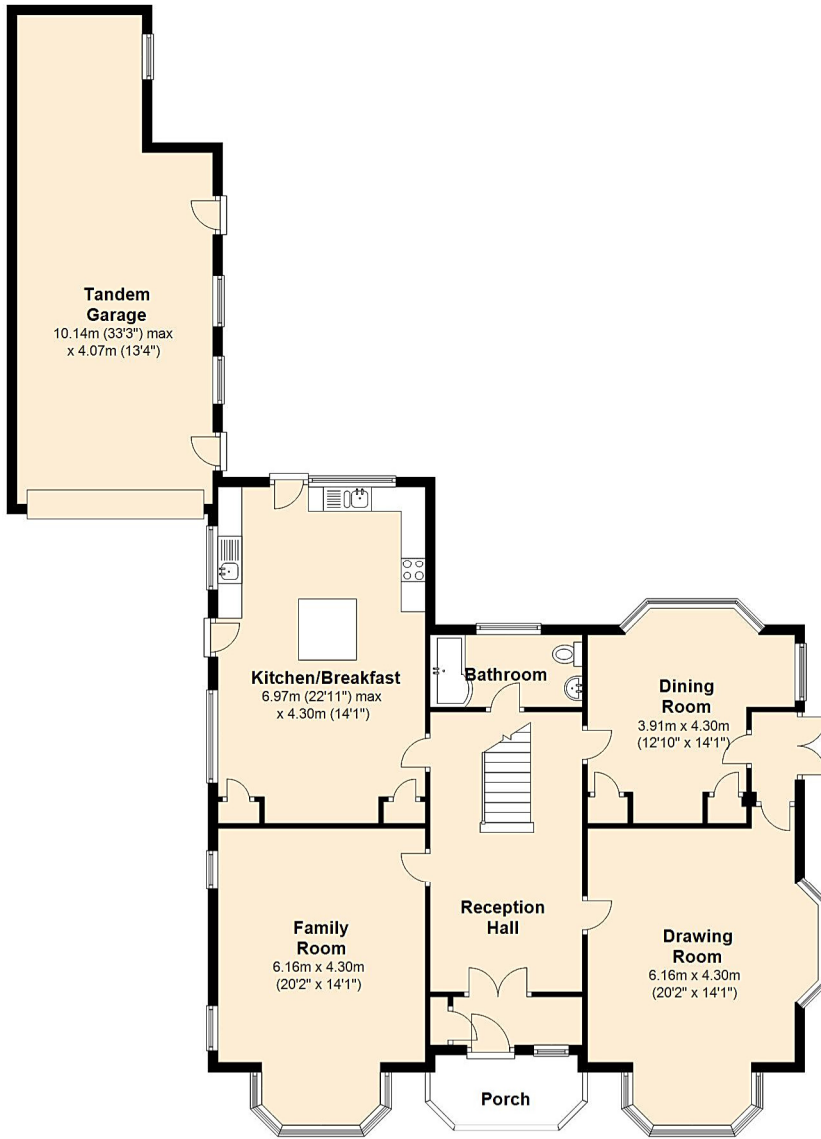
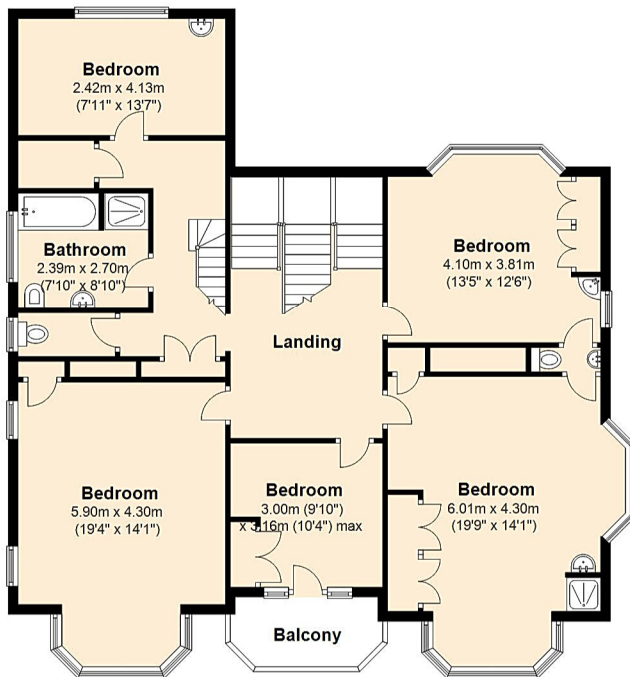


**Ground Floor**  
Approx. 161.7 sq. metres (1740.2 sq. feet)



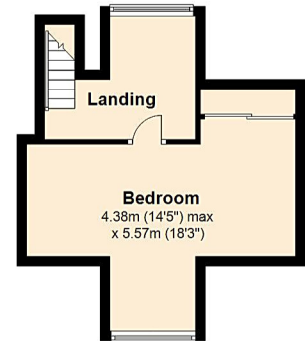
**First Floor**

Approx. 126.4 sq. metres (1360.5 sq. feet)



**Second Floor**

Approx. 25.3 sq. metres (272.6 sq. feet)



Total area: approx. 313.4 sq. metres (3373.3 sq. feet)