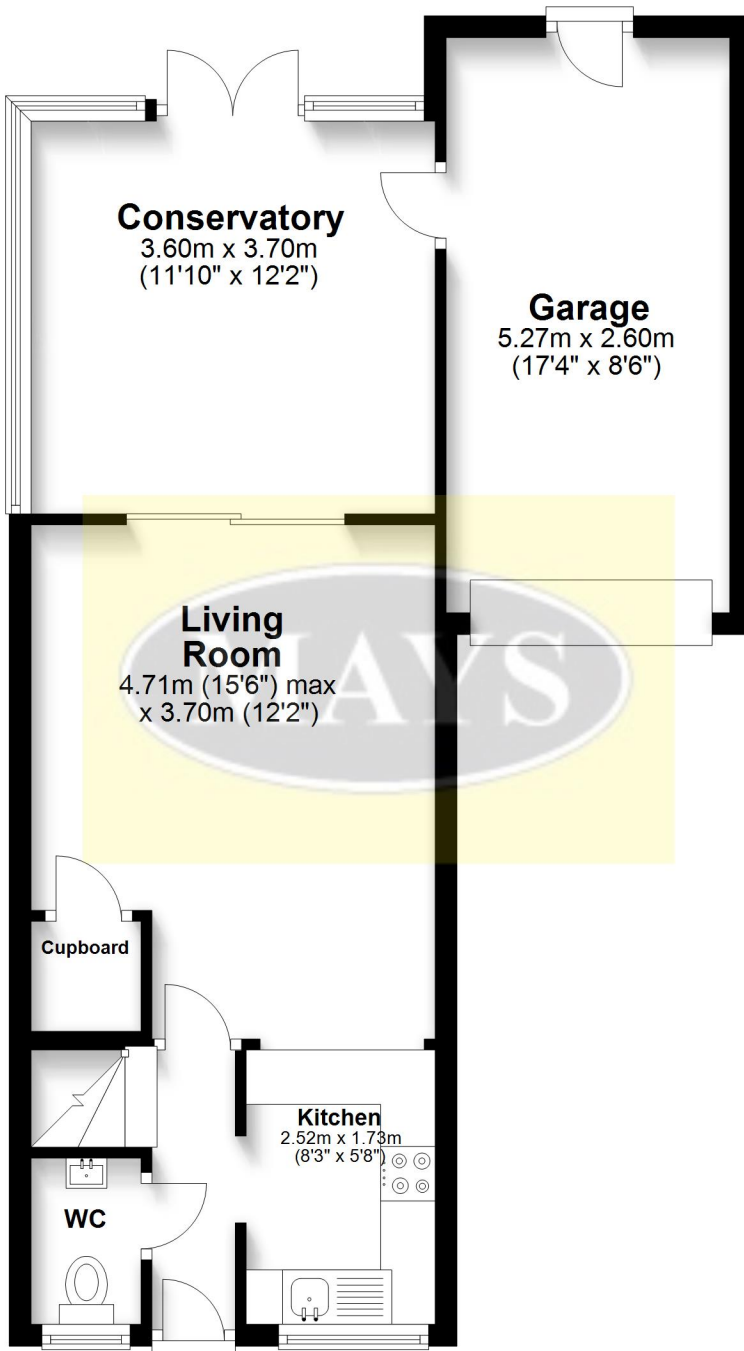


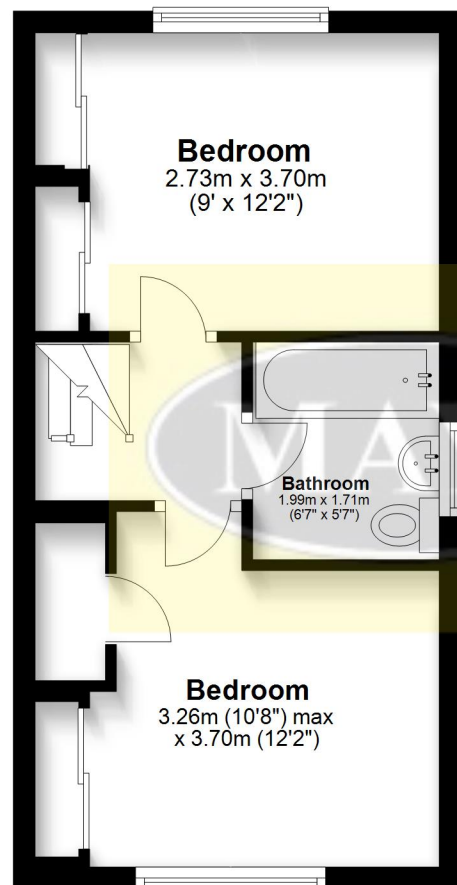
## Ground Floor

Approx. 54.9 sq. metres (591.1 sq. feet)



## First Floor

Approx. 28.3 sq. metres (304.7 sq. feet)



**Total area: approx. 83.2 sq. metres (895.8 sq. feet)**

Bournemouth Energy Floor Plans are provided for illustration/identification purposes only. Not drawn to scale, unless stated and accept no responsibility for any error, omission or mis-statement. Dimensions shown are to the nearest 7.5 cm / 3 inches. Total approx area shown on the plan may include any external terraces, balconies and other external areas. To find out more about Bournemouth Energy please visit [www.bournemouthenergy.co.uk](http://www.bournemouthenergy.co.uk) (Tel: 01202 556006)

Plan produced using PlanUp.