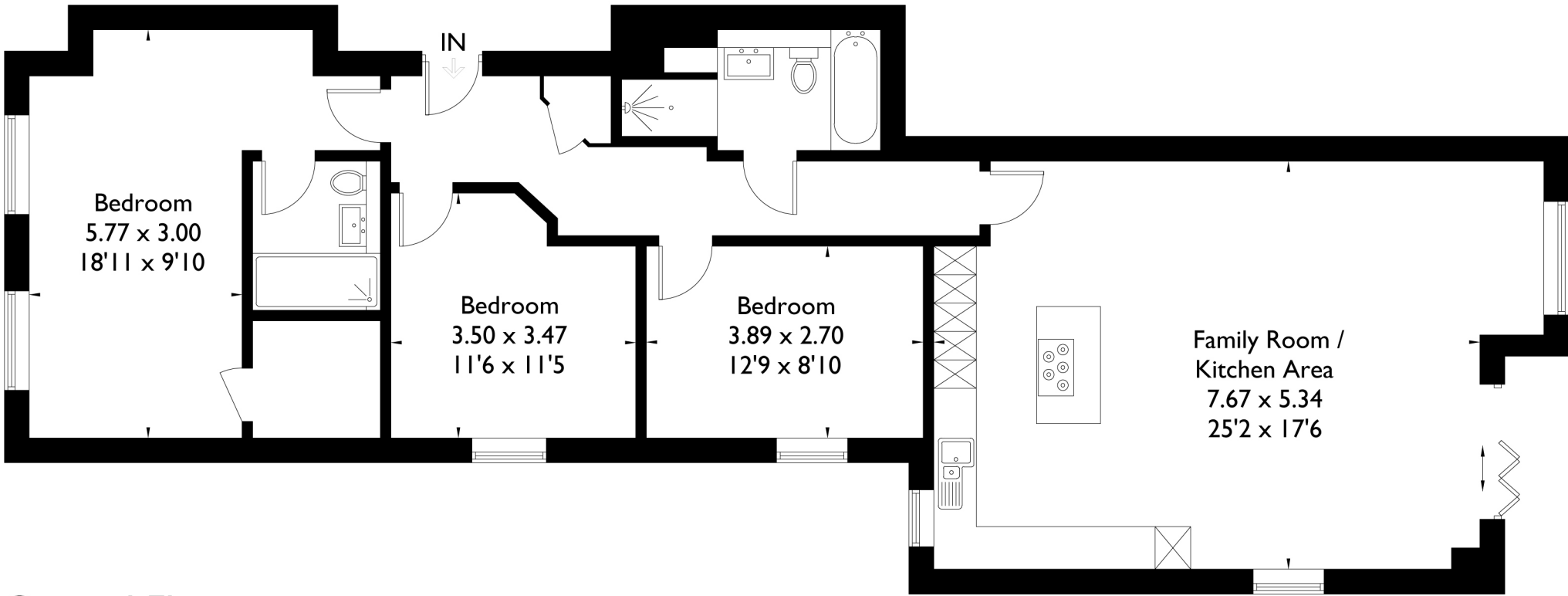


White Pines 103 Lilliput Road Poole, BH14 8JY

Approximate Gross Internal Area = 115.1 sq m / 1239 sq ft



Ground Floor

FLOORPLANZ © 2018 0203 9056099 Ref: 203146

This plan is for layout guidance only. Drawn in accordance with RICS guidelines. Not drawn to scale unless stated. Windows & door openings are approximate. Whilst every care is taken in the preparation of this plan, please check all dimensions, shapes & compass bearings before making any decisions reliant upon them.