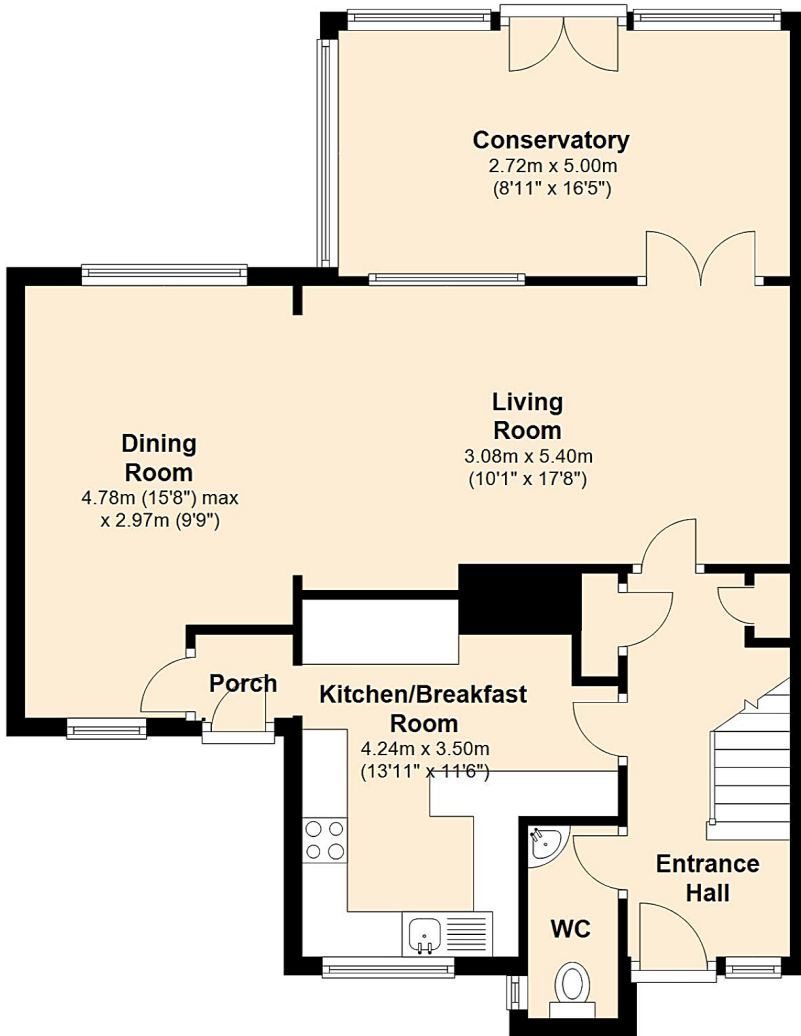
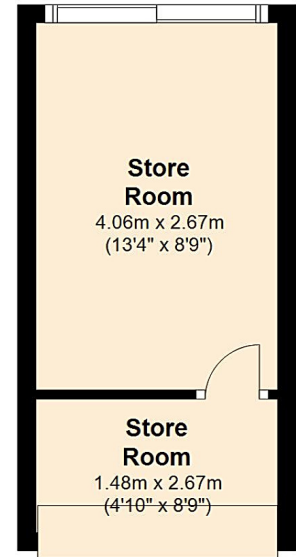


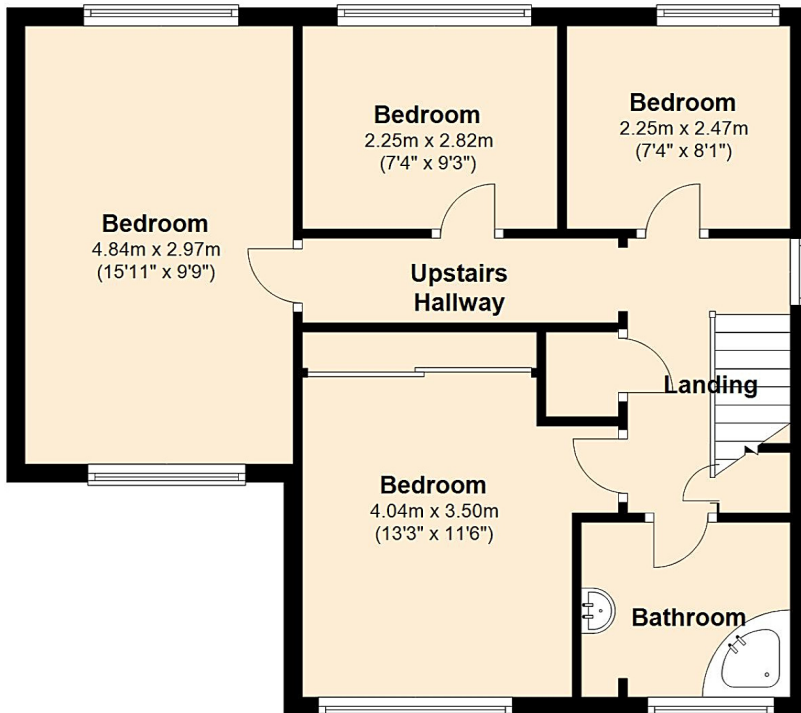
Ground Floor
Approx. 70.0 sq. metres (753.5 sq. feet)



Garage / Store Room
Approx. 15.1 sq. metres (162.1 sq. feet)



First Floor
Approx. 54.8 sq. metres (589.9 sq. feet)



Total area: approx. 139.9 sq. metres (1505.5 sq. feet)

Bournemouth Energy Floor Plans are provided for illustration/identification purposes only. Not drawn to scale, unless stated and accept no responsibility for any error, omission or mis-statement. Dimensions shown are to the nearest 7.5 cm / 3 inches. Total approx area shown on the plan may include any external terraces, balconies and other external areas. To find out more about Bournemouth Energy please visit