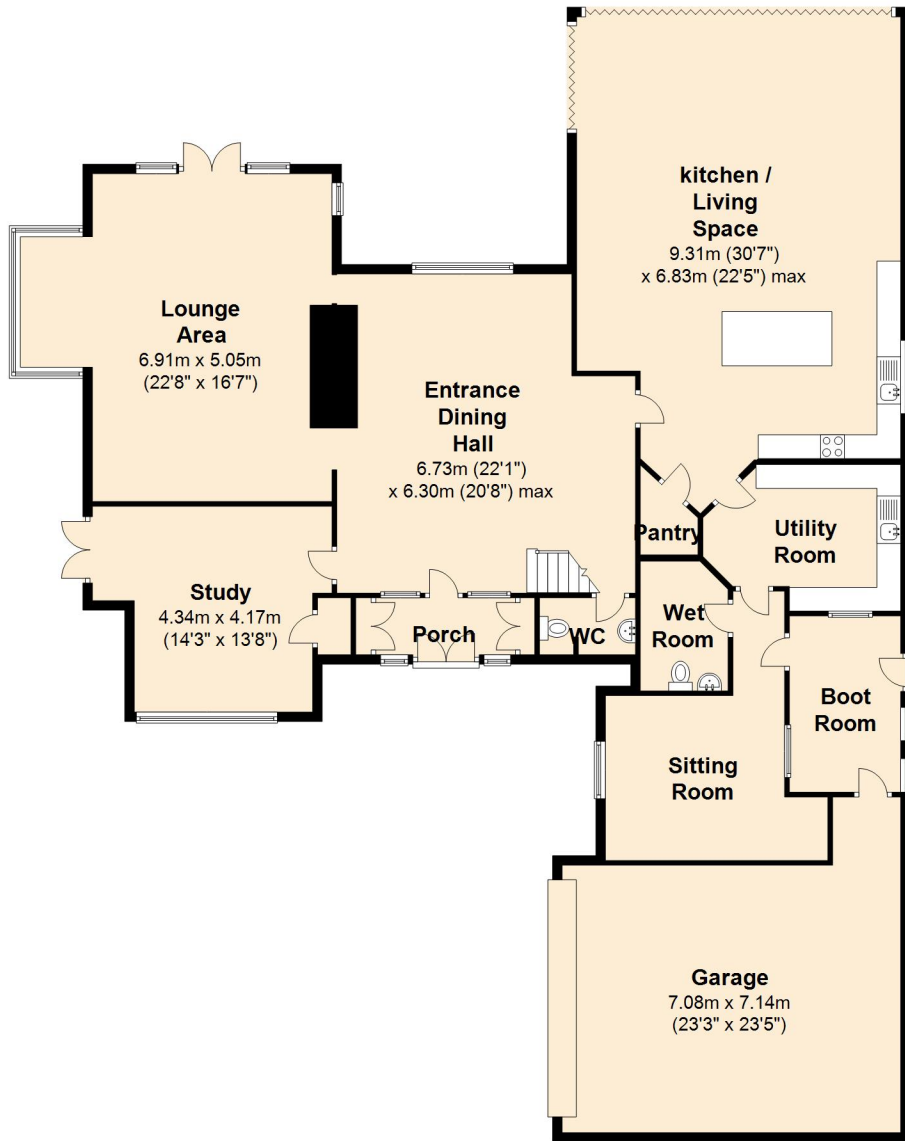


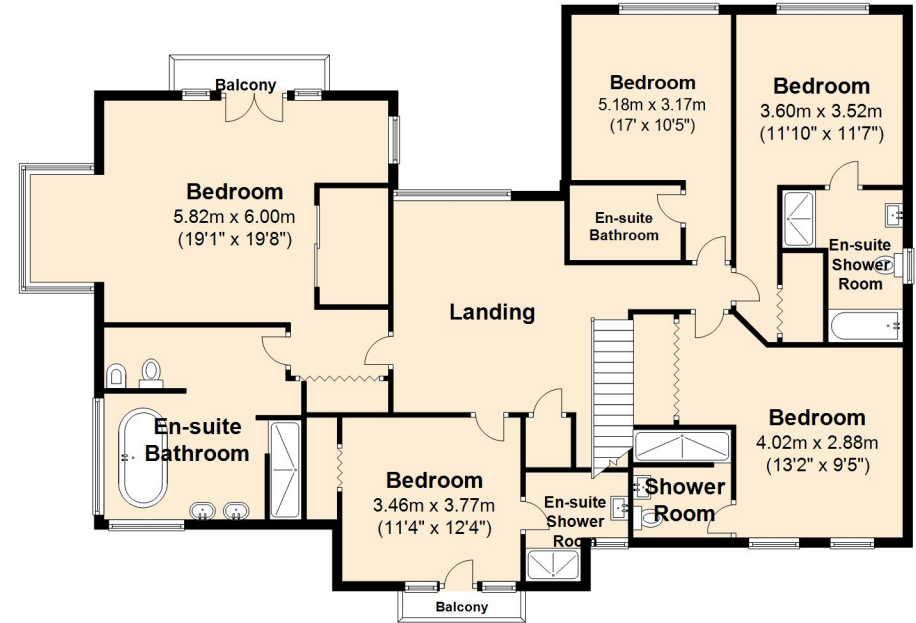
Ground Floor

Approx. 268.7 sq. metres (2892.2 sq. feet)



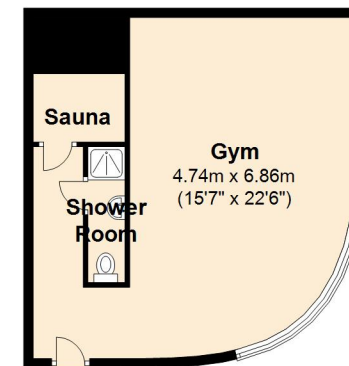
First Floor

Approx. 165.3 sq. metres (1779.4 sq. feet)



Summer House

Approx. 36.8 sq. metres (396.4 sq. feet)



Total area: approx. 470.8 sq. metres (5068.0 sq. feet)

Bournemouth Energy Floor Plans are provided for illustration/identification purposes only. Not drawn to scale, unless stated and accept no responsibility for any error, omission or mis-statement. Dimensions shown are to the nearest 7.5 cm / 3 inches. Total approx area shown on the plan may include any external terraces, balconies and other external areas. To find out more about Bournemouth Energy please visit www.bournemouthenergy.co.uk (Tel: 01202 556006)
Plan produced using PlanUp.