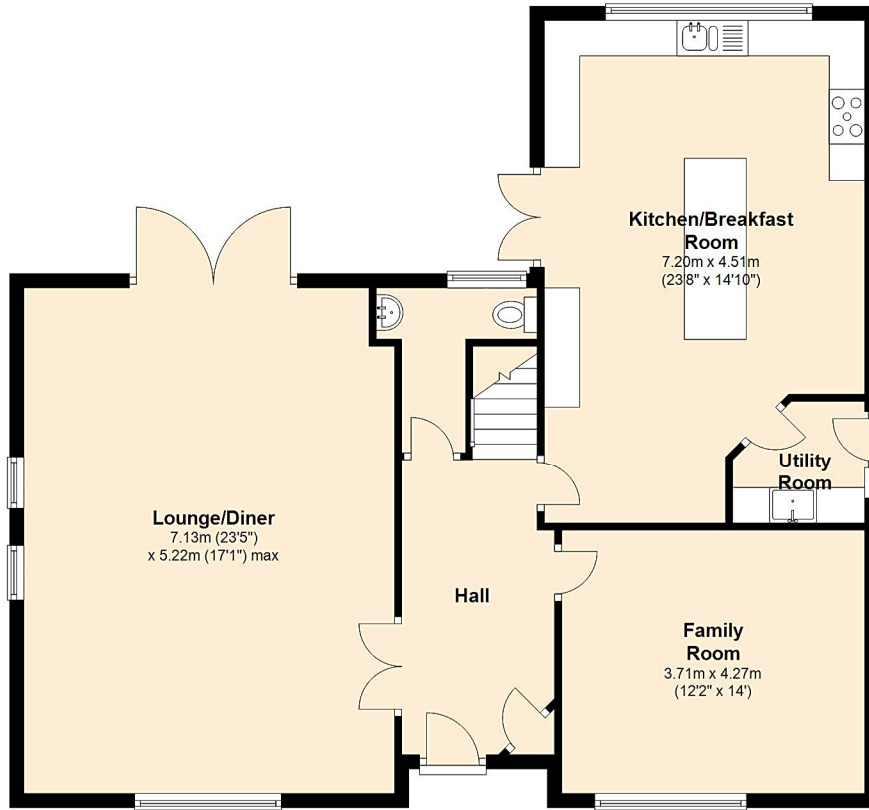


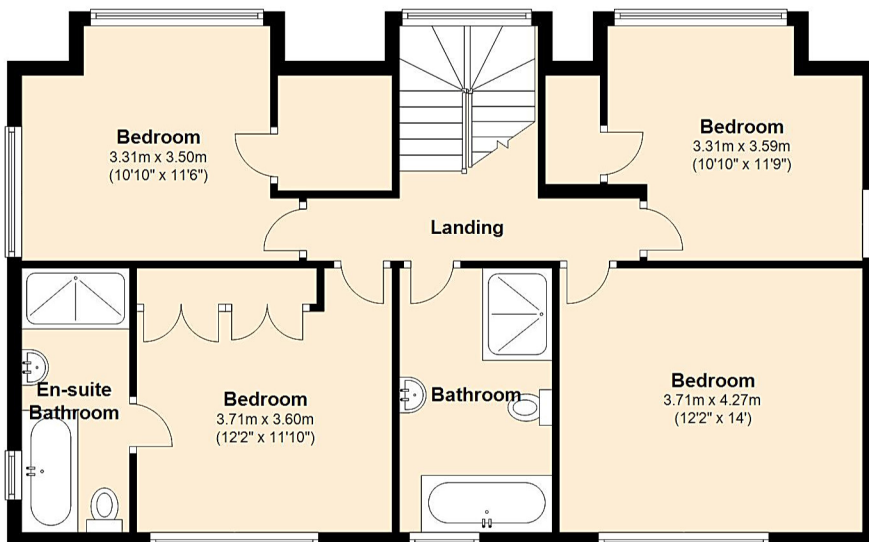
Ground Floor

Approx. 100.0 sq. metres (1076.1 sq. feet)



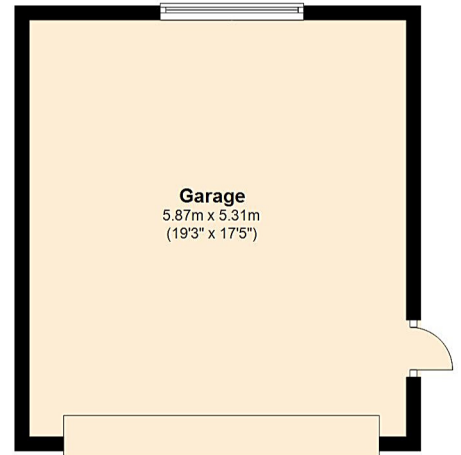
First Floor

Approx. 80.9 sq. metres (871.0 sq. feet)



Garage

Approx. 31.1 sq. metres (335.2 sq. feet)



Total area: approx. 212.0 sq. metres (2282.4 sq. feet)

Bournemouth Energy Floor Plans are provided for illustration/identification purposes only. Not drawn to scale, unless stated and accept no responsibility for any error, omission or mis-statement. Dimensions shown are to the nearest 7.5 cm / 3 inches. Total approx area shown on the plan may include any external terraces, balconies and other external areas.

To find out more about Bournemouth Energy please visit www.bournemouthenergy.co.uk (Tel: 01202 556006)

Plan produced using PlanUp.