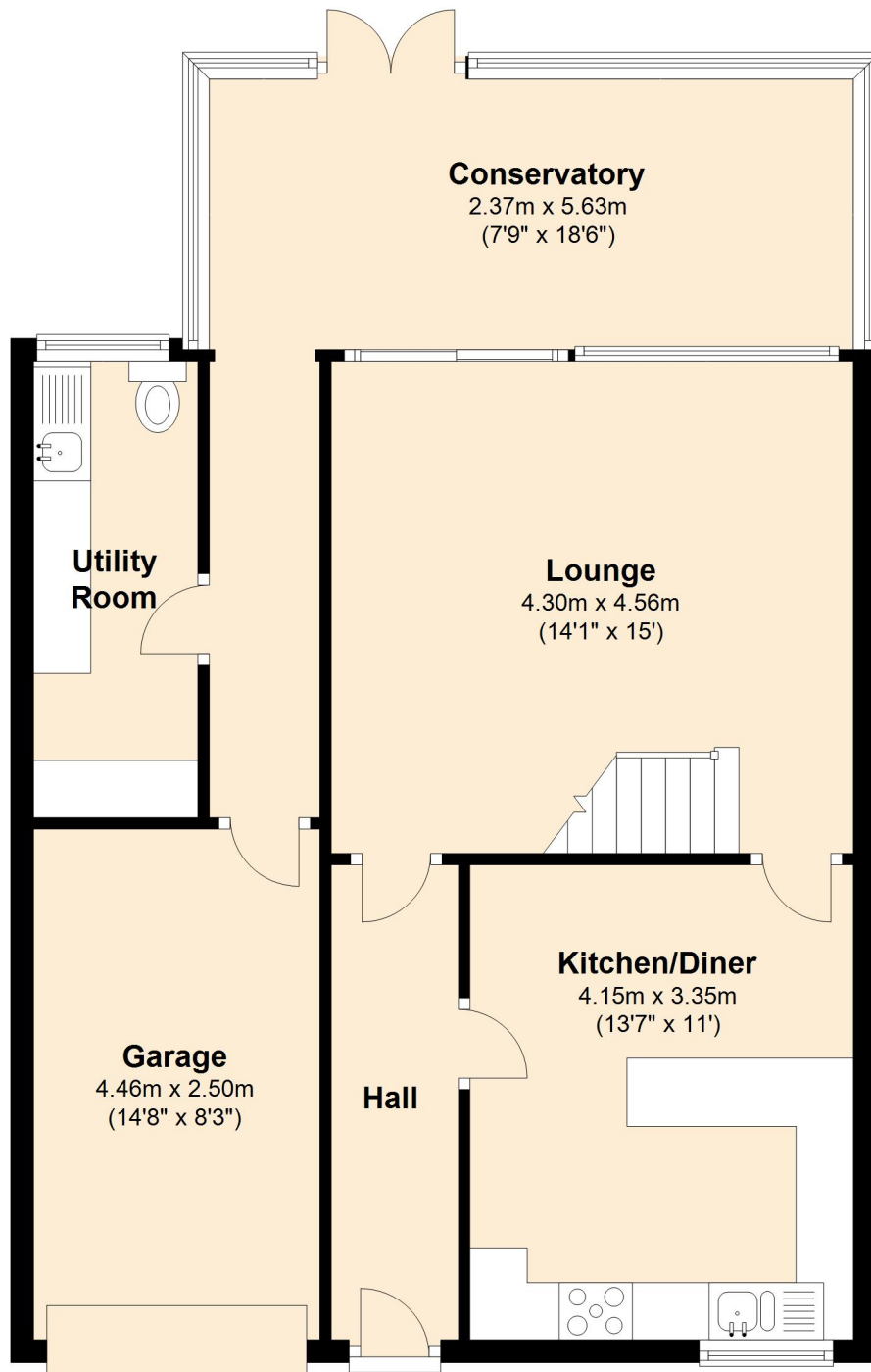
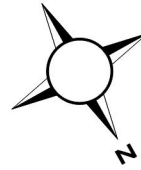


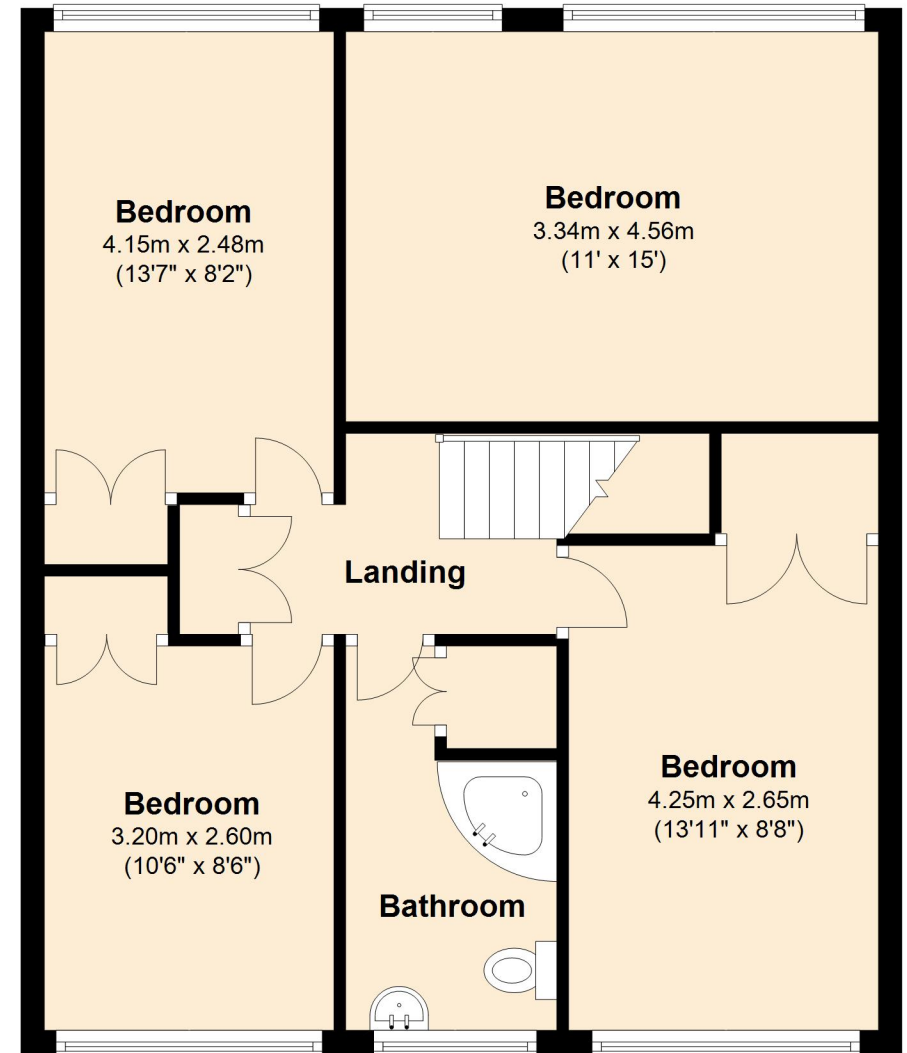
Ground Floor

Approx. 75.1 sq. metres (808.4 sq. feet)



First Floor

Approx. 61.9 sq. metres (666.4 sq. feet)



Total area: approx. 137.0 sq. metres (1474.8 sq. feet)

Bournemouth Energy Floor Plans are provided for illustration/identification purposes only. Not drawn to scale, unless stated and accept no responsibility for any error, omission or mis-statement. Dimensions shown are to the nearest 7.5 cm / 3 inches. Total approx area shown on the plan may include any external terraces, balconies and other external areas. To find out more about Bournemouth Energy please visit www.bournemouthenergy.co.uk (Tel: 01202 556006)

Plan produced using PlanUp.