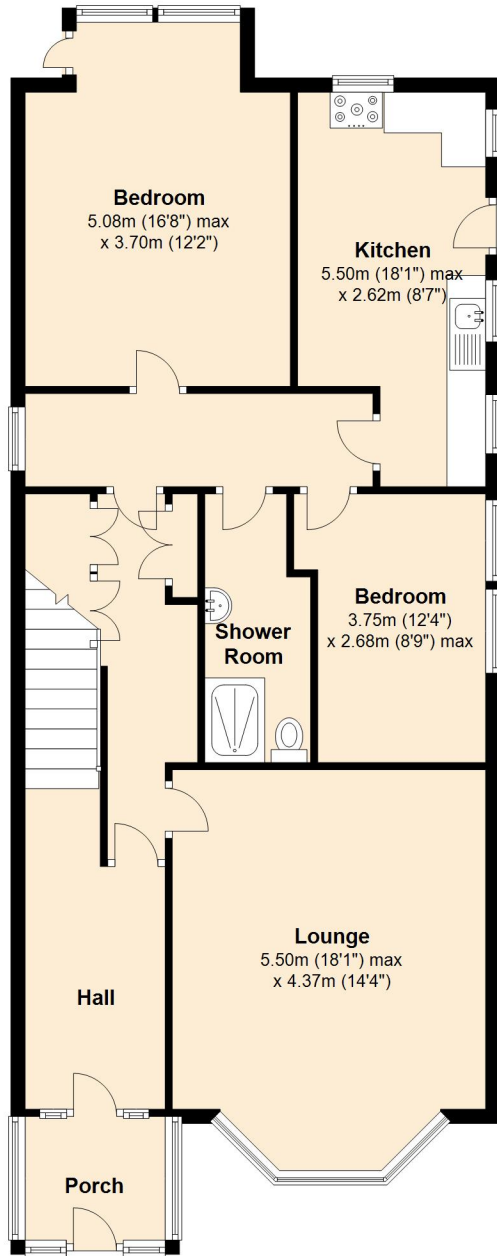


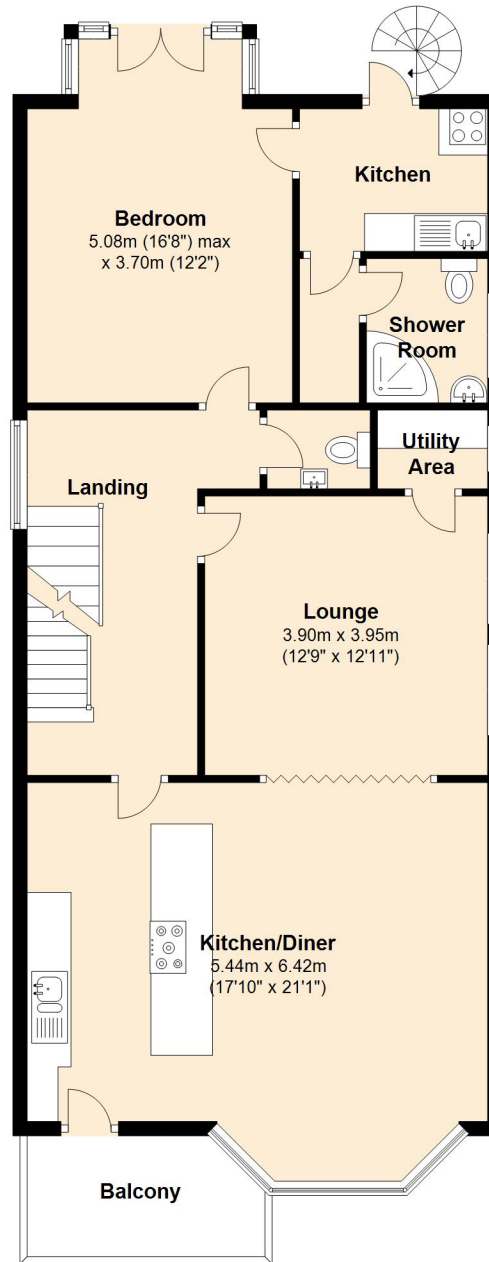
Ground Floor

Approx. 97.4 sq. metres (1048.3 sq. feet)



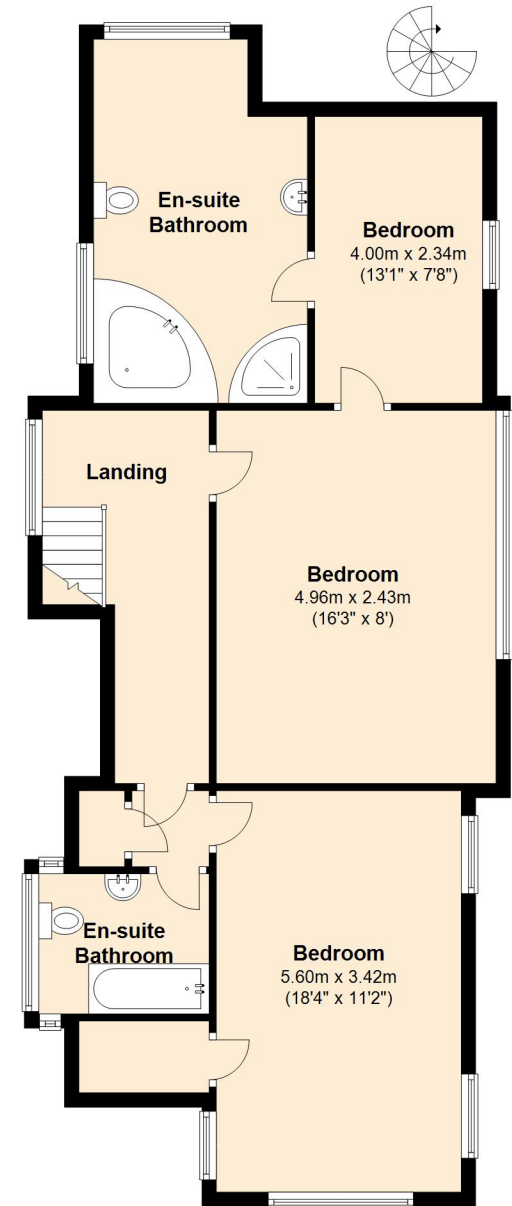
First Floor

Approx. 93.6 sq. metres (1007.4 sq. feet)



Second Floor

Approx. 79.1 sq. metres (851.2 sq. feet)



Total area: approx. 270.1 sq. metres (2906.9 sq. feet)