

6 Tower Road West, Poole, BH13 6LA

Approximate Gross Internal Area = 458.9 sq m / 4939 sq ft

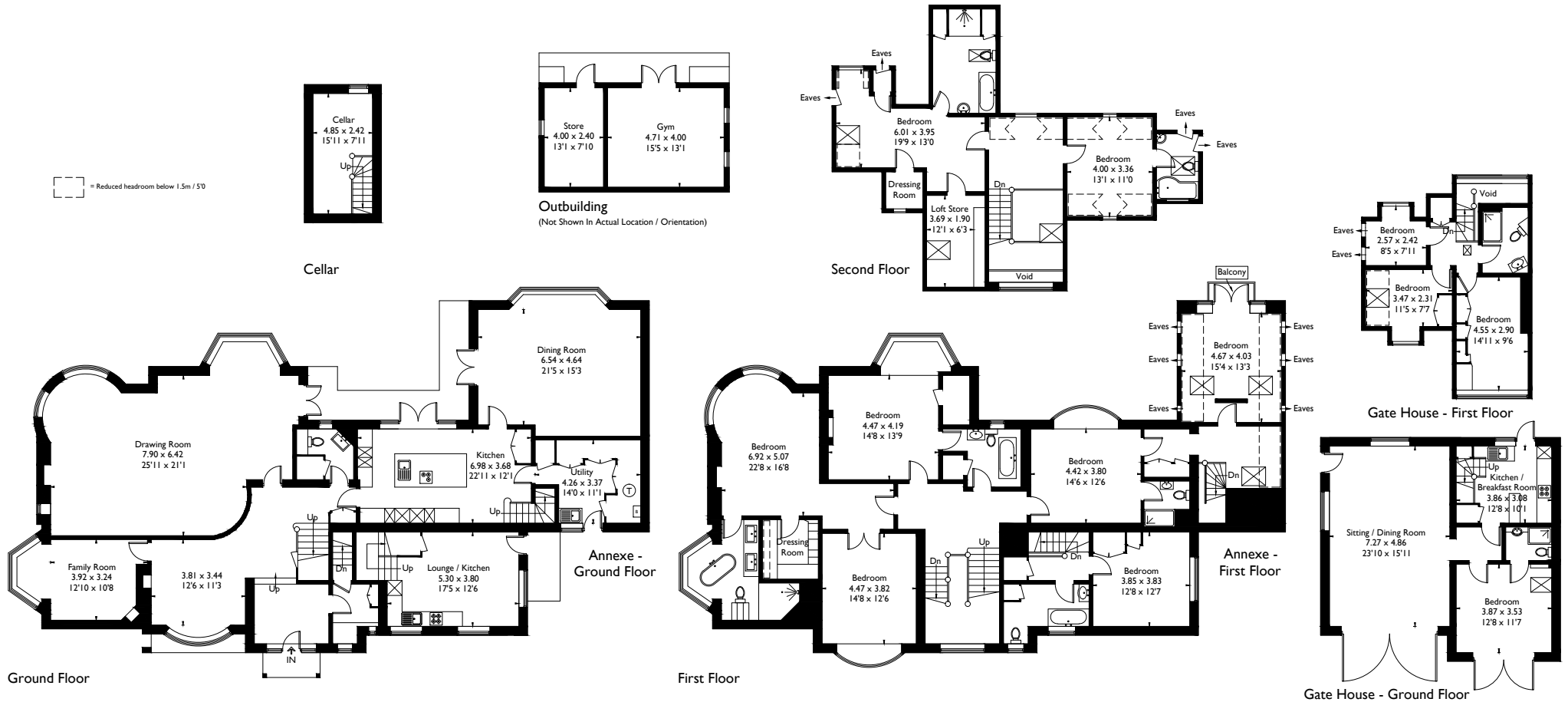
Cellar = 11.6 sq m / 125 sq ft

Annexe = 51.8 sq m / 557 sq ft

Gate House = 109.2 sq m / 1175 sq ft

Outbuilding = 29.0 sq m / 312 sq ft

Total = 660.5 sq m / 7110 sq ft (Excluding Void)



FLOORPLANZ © 2016 0845 6344080 Ref: 170663

This plan is for layout guidance only. Drawn in accordance with RICS guidelines. Not drawn to scale unless stated. Windows & door openings are approximate. Whilst every care is taken in the preparation of this plan, please check all dimensions, shapes & compass bearings before making any decisions reliant upon them.