

# Cassel Avenue, Poole

Approximate Gross Internal Area = 323.3 sq m / 3480 sq ft  
Outbuilding = 72.8 sq m / 783 sq ft  
Total = 396.1 sq m / 4263 sq ft

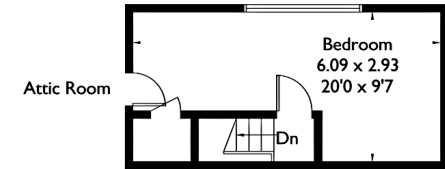
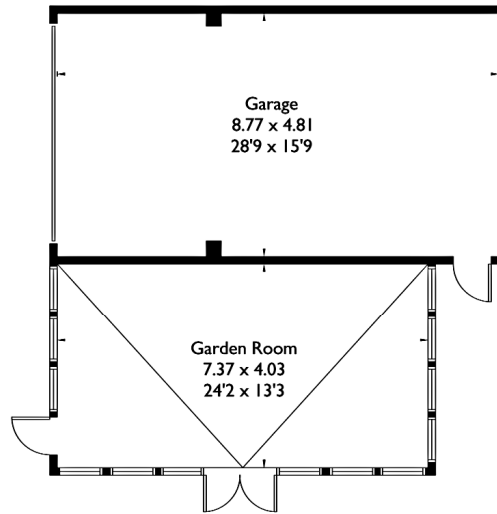


Floorplanz © 2016  
0845 6344080 Ref: 159724

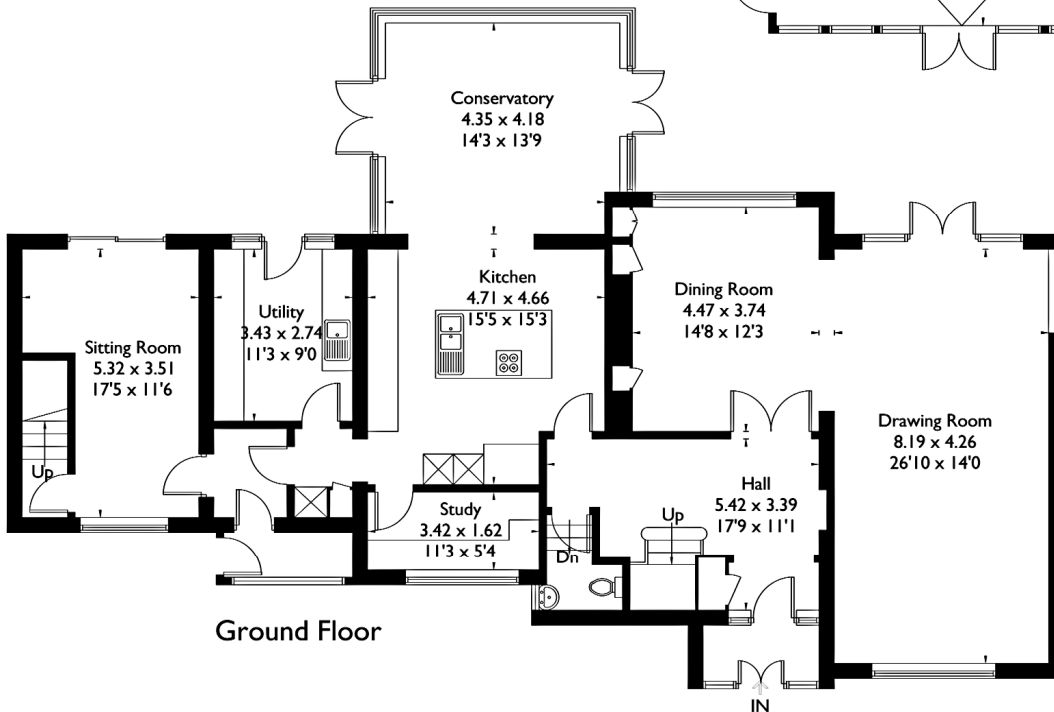
This plan is for layout guidance only.  
Drawn in accordance with  
RICS guidelines. Not drawn to  
scale, unless stated. Windows &  
door openings are approximate.  
Whilst every care is taken in the  
preparation of this plan, please check  
all dimensions, shapes & compass  
bearings before making any  
decisions reliant upon them.

## Garage

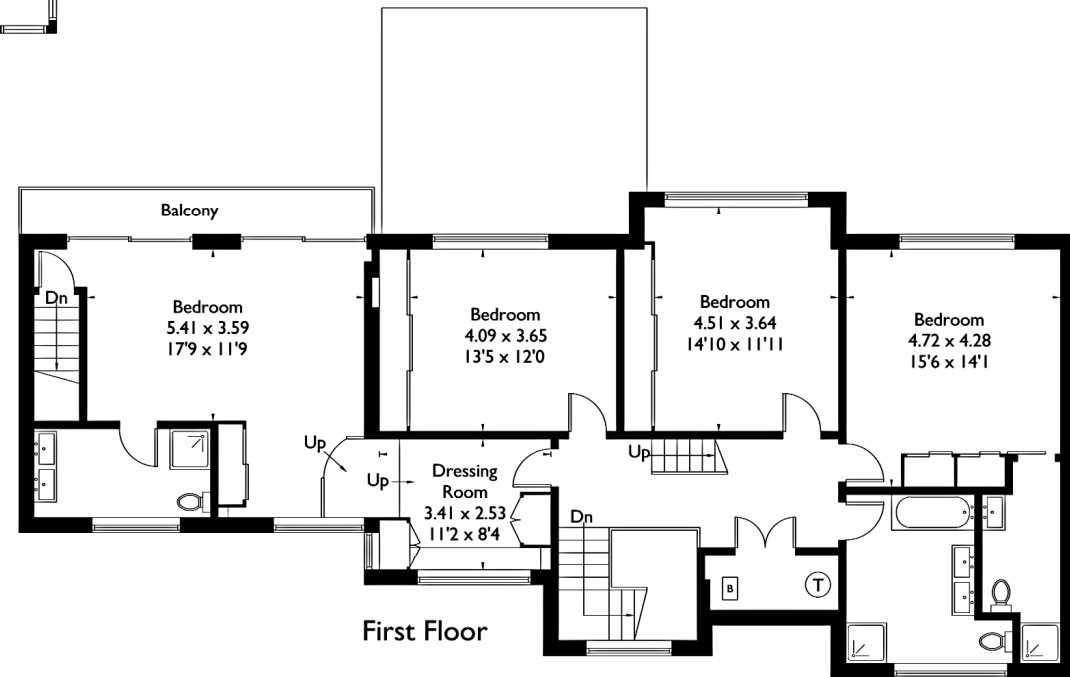
(Not Shown In Actual  
Location / Orientation)



Second Floor



Ground Floor



First Floor